

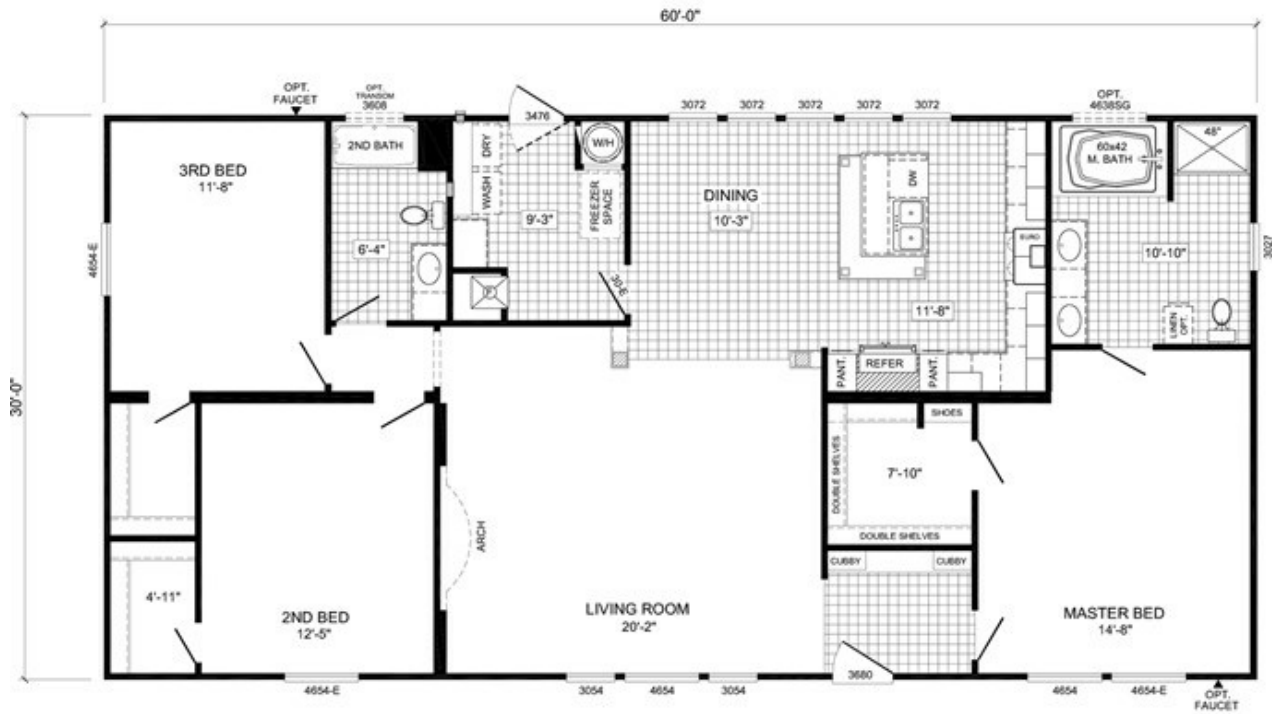


6715DT THE HOWELL



6715DT THE HOWELL Floor plan number: CCV075927ALAB

3 beds • 2 baths • 1920 sq.ft. • 32' width • 60' depth



Our home building facilities invest in continuous product and process improvements. Plans, dimensions, features, materials, specifications and availability are subject to change without notice or obligation. Renderings and floor plans are representative likenesses of our homes and may differ from the actual homes. We invite you to tour a Home Center near you and inspect the highest value in quality housing available or call (256) 734-1213 to speak with a Home Consultant. Copyright 2017, CMH. All rights reserved.

CLAYTON HOMES-CULLMAN

955 COUNTY ROAD 437
CULLMAN, AL 35055

Monday - Thursday: 9am - 6pm

Friday: 9am - 5pm

Saturday: 9am - 5pm

Sunday: Closed

(256) 734-1213